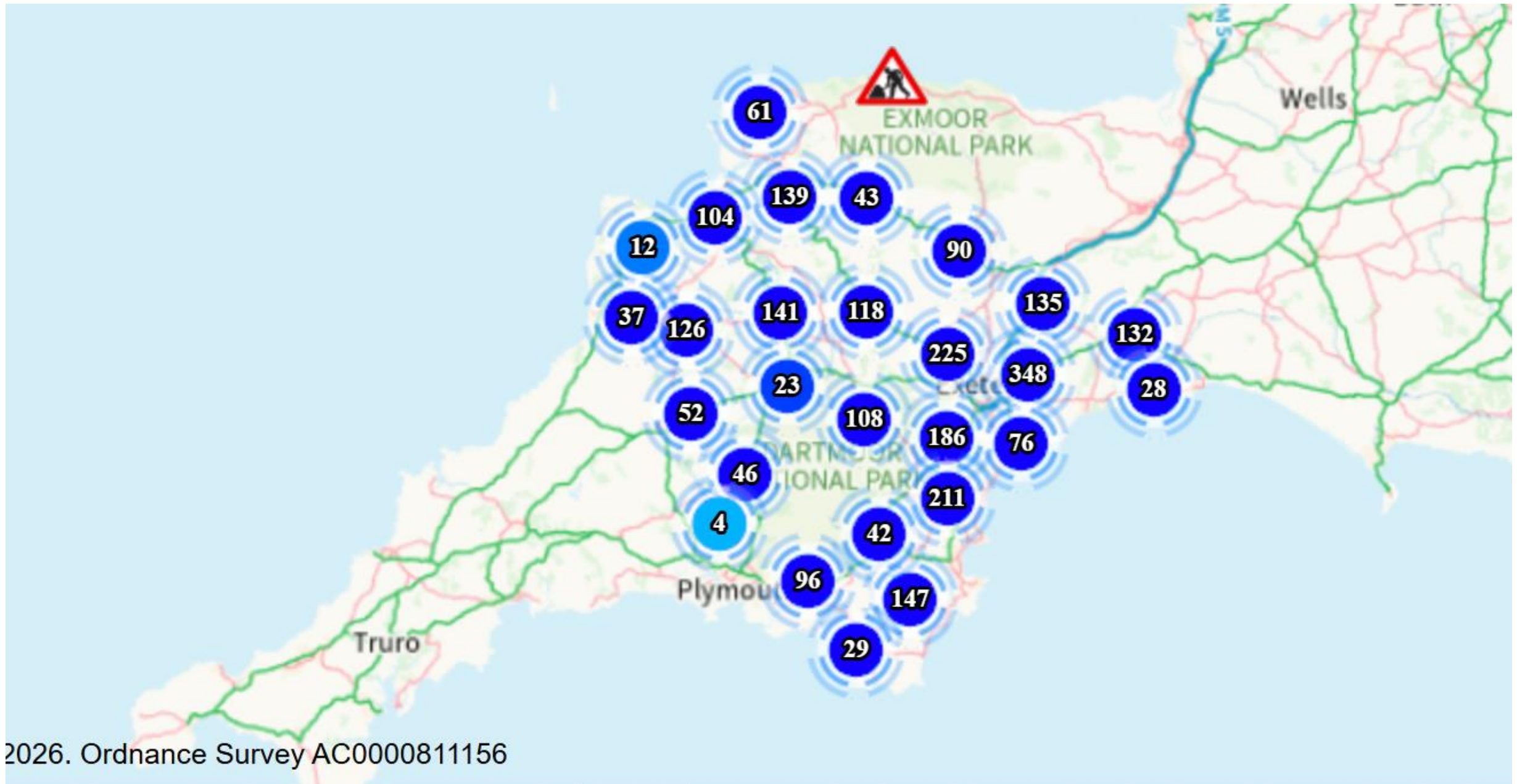


# Villages access issues 2026

- Regular flooding
- Significant potholes
- Major routes into Westleigh and Burlescombe
- Minor (unsuitable) routes into Westleigh and Burlescombe

# Devon issues overview as of 16/02/2026)





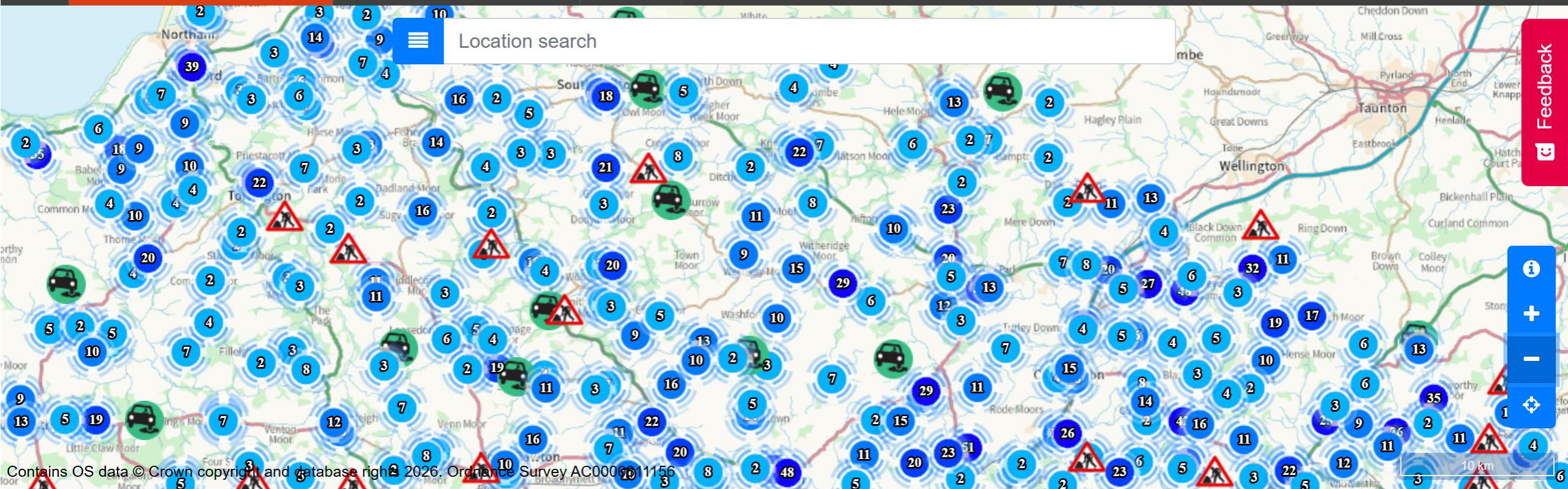
# Roads and transport

Devon County Council

Report a different problem

Help with using the map

Privacy



Feedback

